

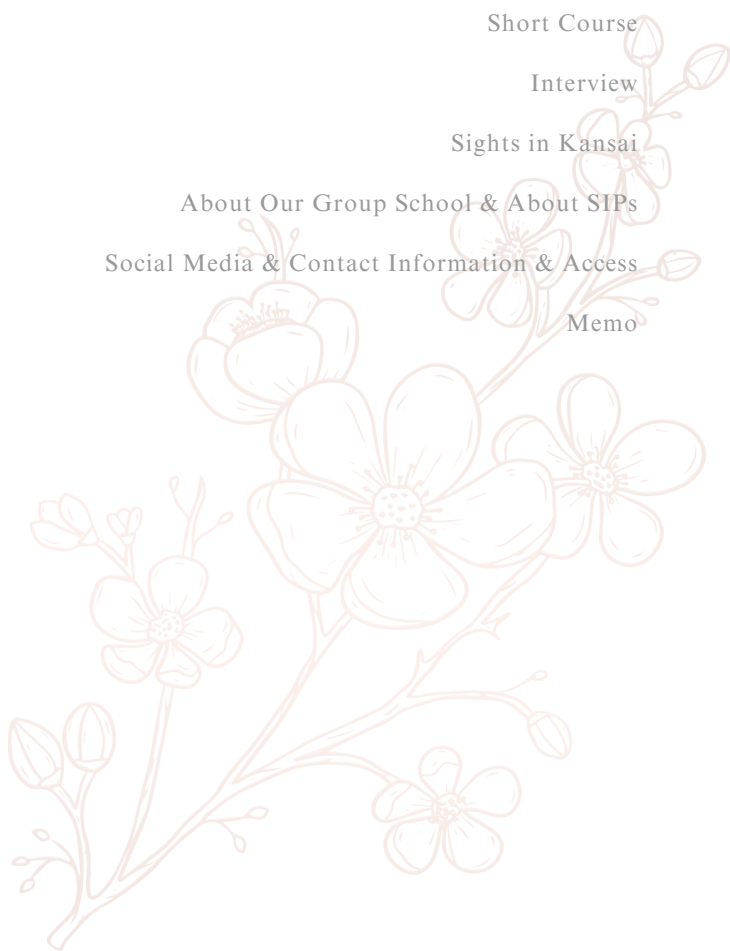


Creating excitement
and Anticipation
for Others,
With others.



C O N T E N T S

Messege	P 1
Hitsory & Philosophy	P 2
Facility	P 3
Mission & Feature	P 4
Time Table & Scholarship	P 5
Student Dormitories & Vicinity	P 6
Study Abroad Life	P 8
Annual Schedule and Event	P 9
Prepapatory Course	P 1 0
Selection	P 1 1
2-Year Progression Course & Refund	P 1 2
1.5-Year Progression Course & Refund	P 1 3
Qualification Requirements	P 1 4
Short Course	P 1 5
Interview	P 1 6
Sights in Kansai	P 1 8
About Our Group School & About SIPs	P 1 9
Social Media & Contact Information & Access	P 2 0
Memo	P 2 1



MESSAGE

KOTARO MAEDA



SIPs Group Representative
KOTARO MAEDA

We, SIPs (Social Inclusion Partners), uphold the vision of "Realizing Social Inclusion, where diverse ○△□ (individualities) flourish in a world of complexities and differences." Howdy Japanese Language School, Nara Campus, is located in the "Social Inclusion Village," an area that embodies this vision. It was established as a new Japanese language education institution to foster a multicultural society. We provide learning opportunities for international students who gather here and support their integration into Japanese society.

※ For more details about the "Social Inclusion Village," please refer to page 17.

MIKA AOKI



Representative Director
MIKA AOKI

Our school is located within the Social Inclusion Village, a pioneering initiative even in Japan. This is a place where people from diverse backgrounds—regardless of race, age, or ability—come together to connect and foster social inclusion. Learning Japanese and engaging with others in this environment will undoubtedly be a valuable asset in your life. We warmly invite you to join us and learn together in this unique community.

KAZUNAGA AOKI



Director
KAZUNAGA AOKI

Among the many Japanese language schools, what factors will you consider when choosing one? Since your student life in Japan is a precious opportunity, you likely want to gain a variety of experiences. Our school is conveniently located near the city, yet surrounded by nature. It's a place where you can interact with diverse people, engage in vocational and local experiences, and immerse yourself in the rich Japanese culture. We look forward to welcoming you to Howdy Japanese Language School, Nara Campus, where you can enjoy a fulfilling student life in Japan.

KANAKO YONEZAWA



Principal
KANAKO YONEZAWA

We aim to create a school that is a "place where everyone belongs" and is "open to the local community." By making the most of our vast campus and nature-filled environment, we will fully support each individual in expressing and achieving their goals, with all our staff working together to make it happen. Let's create excitement and anticipation together at Howdy Japanese Language School, Nara Campus!

SUPPORTER

SUPPORTING YOUR
STUDYABROAD EXPERIENCE!

EDUCATOR



From the Teachers

The characteristics of Howdy Japanese Language School are "Experiential Learning" and "Practical Study Abroad." We provide innovative learning opportunities, allowing you to study while experiencing Japanese life, culture, and customs. Please feel free to ask us anything and share your thoughts. Let's laugh, grow, and make this a wonderful school together!

ADMIN



From the Administrative Staff

All of our administrative staff have study abroad experience. Living abroad can be intimidating at first, but as you become more familiar with the language and culture, you'll be able to enjoy a fulfilling and exciting daily life. Our entire staff is here to support you and bring out your smiles, so please feel free to reach out to us anytime.

HISTORY

- 1973.6 ● Establishment of Howdy Inc.
- 2014.4 ● The opening of Howdy English Academy in Cebu, Philippines
- 2019.3 ● Howdy Vietnam established in Hanoi, Vietnam
- 2019.4 ● The opening of Howdy Japanese Language School, Osaka Campus (Ministry of Justice-Designated School).
- 2019.10 ● Registration of a Registered Support Organization
- 2022.10 ● Howdy Japanese Language School, Osaka Campus, has been selected as a 'Designated School' by the Ministry of Justice
- 2023.10 ● The opening of Howdy Japanese Language School, Nara Campus (Ministry of Justice-Designated School)
- Howdy Japanese Language School, Osaka Campus, has been selected by the Ministry of Justice as a 'Designated School (Class I)
- 2025.10 ● Howdy Japanese Language School, Nara Campus, has been selected by the Ministry of Justice as a 'Designated School (Class II)



PHILOSOPHY

PHILOSOPHY

1



We aim to create a Japanese language school where not only students but also faculty and staff actively engage in learning and growing.

PHILOSOPHY

2



We aim to establish an open Japanese language school created by students, faculty, staff, and the local community.

PHILOSOPHY

3



We aim to be a Japanese language school that contributes to the realization of a diverse and inclusive society.



FACILITY

WALK IN CAMPUS



The classrooms are spacious because the school was formerly a university facility. You can study effectively in classes suited to your level.



A quiet and spacious library where you can study at your own pace. After school, you can review your lessons or read Japanese manga.

It is a school surrounded by nature! After school, we organize festivals from our home countries, grow vegetables and flowers, and enjoy a fun and fulfilling study abroad experience.



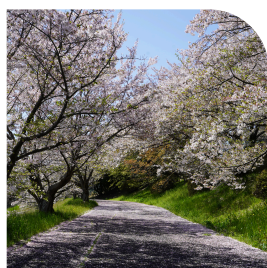
We have a health room and essential medicines prepared in case of sudden illness, so you can feel safe and reassured.



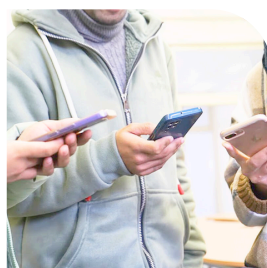
The spacious lobby is equipped with vending machines, and occasional events such as bazaars are held there.



A three-story school building located at the foot of Mount Shigi. From the third floor, you can enjoy a stunning panoramic view of the town.



A nature-rich campus where you can enjoy cherry blossoms in spring and autumn leaves in the fall. It is also known as a famous cherry blossom spot.



All classrooms are equipped with air conditioning and Wi-Fi, allowing you to focus on your studies in a comfortable environment.



Next to the school building, we tend a small garden and enjoy growing flowers and vegetables throughout the seasons.

MISSION

CREATING
EXCITEMENT
AND ANTICIPATION
FOR OTHERS,
WITH OTHERS.

Howdy Japanese Language School strives to be a place where both students and staff can learn and grow. Together with the local community, we aim to create **excitement and anticipation**, contributing to the realization of a multicultural society that embraces diversity.

We will provide strong support to ensure that all students can experience excitement and anticipation while enjoying their study abroad journey with peace of mind!



FEATURE

Providing comprehensive support from enrollment to graduation. Here are six key features of Howdy Japanese Language School, Nara.

FEATURE 1

Comprehensive support for further education and employment



We conduct interviews from the time of enrollment, offering complete guidance on interview preparation, how to write a study plan, and more.

FEATURE 2

Preparation for the EJU and JLPT



Since the teachers offer kind support not only with lessons but also with other matters, you can study with peace of mind.

We offer preparatory classes free of charge.



FEATURE 3

Assistance with residence card renewal



Normally, international students are required to visit the Immigration Bureau in person to complete the application process, but at Howdy, the school handles everything on their behalf, including document preparation and submission.

FEATURE 4

Life support or living support



The school provides support with arranging dormitory accommodations, resident registration, opening a Japan Post Bank account, accompanying students to the hospital, and helping them find part-time job opportunities.

FEATURE 5

Interaction with various people



The school is part of a borderless community and regularly organizes exchange events with employment support facilities and local elementary and junior high schools.

FEATURE 6

Many events that allow you to experience Japanese culture



Participation in local festivals and Coming-of-Age ceremonies.

At Howdy, we offer opportunities to learn about Japanese society and culture.

TIME TABLE

The school is about a 15-minute walk from the dormitory, and I walk there while chatting with my friends



1st period



9:00

Lesson Start

5-minute break

9:45



In the morning, you can focus on studying Japanese, and in the afternoon, enjoy your personal time by working part-time, hanging out with friends, and making the most of your free time.



I enjoy taking classes with friends from various nationalities.



2nd period

9:50

5-minute break

10:35

You can experience Japanese culture through extracurricular activities such as community exchange programs.

3rd period

10:50

5-minute break

11:35



Once a month, after class, the assigned class cleans from the school to the dormitory.

4th period

11:40

12:25

Lesson End

- Classes are held five days a week, from Monday to Friday.
- No classes on Saturdays, Sundays, and national holidays.
※Long vacations are also available.
- All classes take place in the morning only.
- Each lesson is 45 minutes long, with four lessons per day.
- Each class has approximately 20 students.
- Class placement is determined by a placement test.



SCHOLARSHIP



Our original scholarship program

1

JLPT Pass Incentive Program

This is an incentive program that provides a monetary reward to students who pass the JLPT N1 or N2 level after enrolling in our school.

2

University and Graduate School Advancement Incentive Program

This is a scholarship program for students who are admitted to and enroll in a prestigious university or graduate school designated by our institution (excluding research students).

3

Financial Incentive for EJU Test Takers

This is an incentive program that awards a financial reward to students who achieve excellent results on the EJU (Examination for Japanese University Admission for International Students) after enrolling in our school.

4

Perfect Attendance Scholarship and Tuition Reduction Program

This program offers a partial tuition reduction for the following year to diligent students who achieve a high attendance rate in their first year.



Additional Scholarships

1

Scholarship Grant Program for Privately Financed International Students

This scholarship is provided by the Japan Student Services Organization (JASSO) and is awarded for one year while the student is enrolled at our school. The scholarship amount is 360,000 yen (30,000 yen per month for 12 months).

2

Scholarship Grant Program for Privately Financed International Students

This scholarship is provided by the Japan Student Services Organization (JASSO) and is awarded for one year during the student's enrollment at our school. The scholarship amount is 576,000 yen (48,000 yen per month for 12 months).

STUDENT DORMITORIES

DORMITORY

You can move in from the very day you arrive in Japan without complicated procedures. The residence is located in a quiet neighborhood surrounded by beautiful nature, offering a peaceful living environment.



- ✓ About a 13-minute walk from the school.
- ✓ There is a management building with a resident manager on site.
- ✓ Staff are available to assist with any room issues.
- ✓ Convenience stores and a post office are nearby.
- ✓ It is about a 10-minute walk to the nearest station (JR Sango Station).

Main Facilities:

Refrigerator / Microwave / Fully Automatic Washing Machine / Bedding Set / Wi-Fi, etc.



Please note: Each student dormitory room is shared by approximately four residents.



I cook meals together with my roommate.

It is a quiet environment where you can focus well on reading and exam preparation.

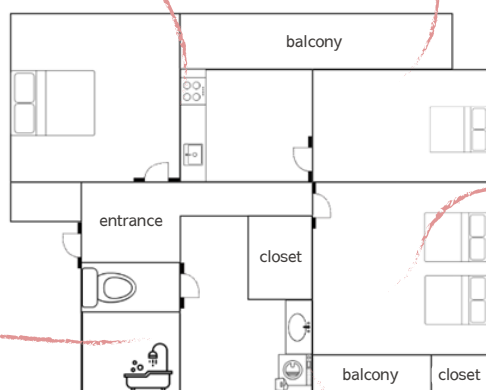


Living in the student dormitory is fun because I cook meals with my roommates. Through dorm life, you can also learn important aspects of daily life in Japan, such as cleaning and how to dispose of garbage properly.

A spacious and relaxing space

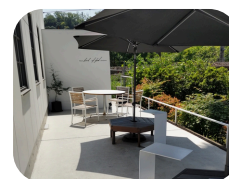


shower room



VICINITY

Convenience stores and a post office are close to the student dormitory, making it very convenient! The nearest station is a 10-minute walk away.



STUDENT DORMITORIES

GENERAL LIVING EXPENSES

ABOUT PART-TIME JOBS

In Japan, international students with a "Student" residence status are permitted to work part-time (with a permission for activities outside their visa status) for **up to 28 hours per week**. During long school breaks, they may work **up to 40 hours per week**. If you exceed these limits, you will not be able to renew your residence status. Additionally, at Howdy Japanese Language School, such violations may result in dismissal, so please be careful.

total amount : 112,000yen

Rent (per month)	25,000 yen
Electricity bill	3,000 yen
Gas bill	3,000 yen
Food expenses	30,000 yen
Mobile phone bill	6,000 yen
Book expenses	5,000 yen
Entertainment & social expenses	30,000 yen
Other expenses	10,000 yen

※The above living expenses are just an example.

DORMITORY FEES

Monthly Dormitory Fee

per person 25,000 yen / month~

※Wi-Fi fees and water charges are included in the dormitory fee.

Others

Electricity and gas bills are paid based on actual usage.

DORMITORY RULES

※Please pay the dormitory admission fee and six months' rent at the time of the first-year tuition payment.

- A minimum stay of six months is required as a general rule.
- The dormitory admission fee (¥60,000) and six months' rent (¥150,000) must be paid in a lump sum at the time of the first-year tuition payment.
- From the seventh month onward, dormitory fees must be paid in advance by the previous month. Payments are automatically withdrawn from your bank account each month.
- (For example: The rent for October is paid in September.)
- If dormitory fees are unpaid, you will be required to leave the dormitory.
- Upon leaving the dormitory, a withdrawal fee of ¥40,000 will be charged. Additionally, if there are any costs for restoring the room to its original condition, the student will be responsible for those expenses.

※For further details regarding dormitory regulations, please contact us separately.

STUDY ABROAD LIFE

Ms. GIRI (from Nepal)



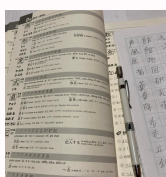
GIRI



DIBYA

When I first came to Japan, I was very anxious and had difficulties like getting lost. Now, I have gotten used to life in Japan and am enjoying it very much. I want to continue studying hard so that I can achieve my goal of working in nursing care.

- 6:30** Wake Up & Breakfast
I eat bread for breakfast.
- Going to School**
- 9:00** Classes
It's very interesting to consult with teachers and study with classmates!
- 12:25**
- 13:00** Returning Home & Lunch
- 14:00** Part-time Job
I work part-time in caregiving. I talk with elderly people and help them with meals.
- 19:00** Returning Home & Dinner
I take a bath and relax.
- Studying**
I do homework and review and prepare lessons.
- 0:00** Going to Bed



On my days off, I go out with my friends.



Mr. KIEN (from Vietnam)



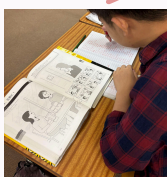
LU HOANG



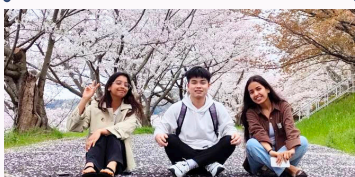
KIEN

Life in Japan is very busy with studying and working part-time, and I don't get as much sleep as I would like. However, for my personal growth and to fulfill my dream of becoming a car engineer in Japan, I am working hard every day.

- 7:30** Wake Up & Breakfast
Since I live in Osaka, I commute to school by train.
- Going to School**
- 9:00** Classes
I enjoy studying with friends from Nepal, Bangladesh, Myanmar, and China.
- 12:25**
- 13:15** Returning Home & Lunch
I take the train back to my home in Osaka. I usually have lunch around 1:30 p.m.
- 17:00** Part-time Job
I work part-time from 5 p.m. to 11 p.m. at an izakaya, doing kitchen and hall duties.
- 1:00** Returning Home & Dinner
After returning home, I take a bath.
- Studying**
I do my homework and review and prepare for classes.
- 2:00** Going to Bed



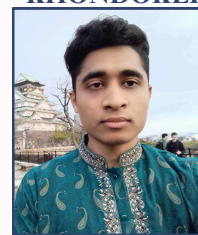
I study Japanese hard every day.



Mr. KHALID (from Bangladesh)



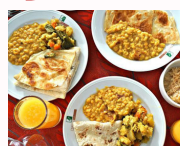
KHONDOKER



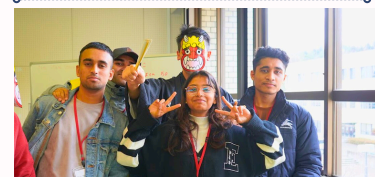
KHALID

Every day brings many new encounters, so time passes quickly. Learning a new culture, living in a new environment, and making new friends are very enjoyable. My goal is to work at a Japanese airport, and I am working hard every day to achieve it.

- 6:00** Wake Up & Breakfast
- Going to School**
- 9:00** Classes
Besides classroom lessons, there are various activities where you can learn about Japanese culture and rules.
- 12:25**
- 13:00** Returning Home & Lunch
After having lunch with my roommates, I take a short nap for about 30 minutes to prepare for my part-time job.
- 17:00** Part-time Job
I work in the kitchen at a conveyor belt sushi restaurant, making sushi.
- 22:30** Returning Home & Dinner
After returning home, I rest for about 30 minutes.
- Studying**
I do my homework and read books.
- 23:30** Going to Bed



I enjoy studying together with friends from many different countries.



ANNUAL SCHEDULE AND EVENT

04

April Entrance Ceremony
Cherry Blossom Viewing (Hanami)
On-Campus Advancement Information Session (for current students)



Howdy Japanese Language School Nara School offers many unique events. We provide students with opportunities not only to study but also to experience Japanese life and culture.

※Event details are subject to change.

05

Police Crime Prevention and Traffic Safety Lecture
Evacuation Drill



06

EJU (Examination for Japanese University Admission for International Students) – First Session
Midterm Exam (First Semester)
Off-Campus Advancement Information Session
Health Checkup for April Enrollees



07

Japanese Language Proficiency Test (JLPT)
On-Campus Advancement Information Session
Summer Festival on Campus
Tanabata Festival
Summer Vacation



08

Career Counseling Session (1st Round)
Summer Festival & Fireworks
School Exchange Event



10

October Entrance Ceremony
Autumn Break / Tatsuta Taisha Autumn Grand Festival
Sango Town Cultural Festival / Sango Town Sports Festival



09

End-of-Term Exam (First Semester)



I feel very fulfilled because I can also participate in local community events.

11

Police Crime Prevention and Traffic Safety Lecture
Evacuation Drill
EJU (Examination for Japanese University Admission for International Students) – Second Session



12

Japanese Language Proficiency Test (JLPT)
Health Checkup for October Enrollees
Midterm Exam (Second Semester)
School Exchange Event
New Year's Card Writing & Year-End Cleaning
Winter Vacation



01

New Year's Shrine Visit
First Calligraphy of the Year
Sango Town Ekiden Relay Race
Coming-of-Age Ceremony
Kite Flying



02

Final Examination
Setsubun Bean-Picking Contest



03

Second Semester Final Exam
Graduation Ceremony
Interaction with Elementary and Junior High School Students
Spring Vacation



PREPARATORY COURSE



Course Overview

Before enrollment, we confirm each student's future goals.

We provide support to help them pass the entrance exams and advance to their desired schools that match their aspirations.

Course	Total Study Hours	Capacity
2-Year Course (April Intake)	1600 hours	Around 40 students
1-year and 6-month course (October Intake)	1200 hours	Around 20 students

※The capacity may vary depending on the number of enrolled students.



Features of the Advancement Course

Classes

We comprehensively develop the skills of reading, writing, listening, and speaking.

Students cultivate the ability to express their opinions and ideas in Japanese by applying the knowledge they have learned.

Rather than simply teaching vocabulary and grammar, our classes focus on the ultimate “behavioral goals” as the main objective.

Interaction

Students actively participate in local facilities and events.

We also invite community members to school events to deepen mutual exchange.

Through various opportunities for interaction, students gain confidence in speaking Japanese.

They learn not just “Japanese that somewhat gets through,” but Japanese that truly communicates their message.

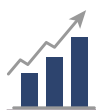
Academic and Career Support

We provide each student with a personalized study and career plan tailored to their desired future path.

Every three months, students have meetings with their homeroom teacher and career advisor.

Exam Preparation Course

We offer JLPT (Japanese Language Proficiency Test) and EJU (Examination for Japanese University Admission for International Students) preparatory courses for those who wish to take them.



Exam Preparation Course

We offer exam preparation courses for students in the 2-Year Advancement Course and the 1 Year 6 Months Advancement Course who wish to participate.

There are no additional fees for attending the courses or for materials.



JLPT Preparation Course

For two months before the exam, we offer level-based exam preparation courses.

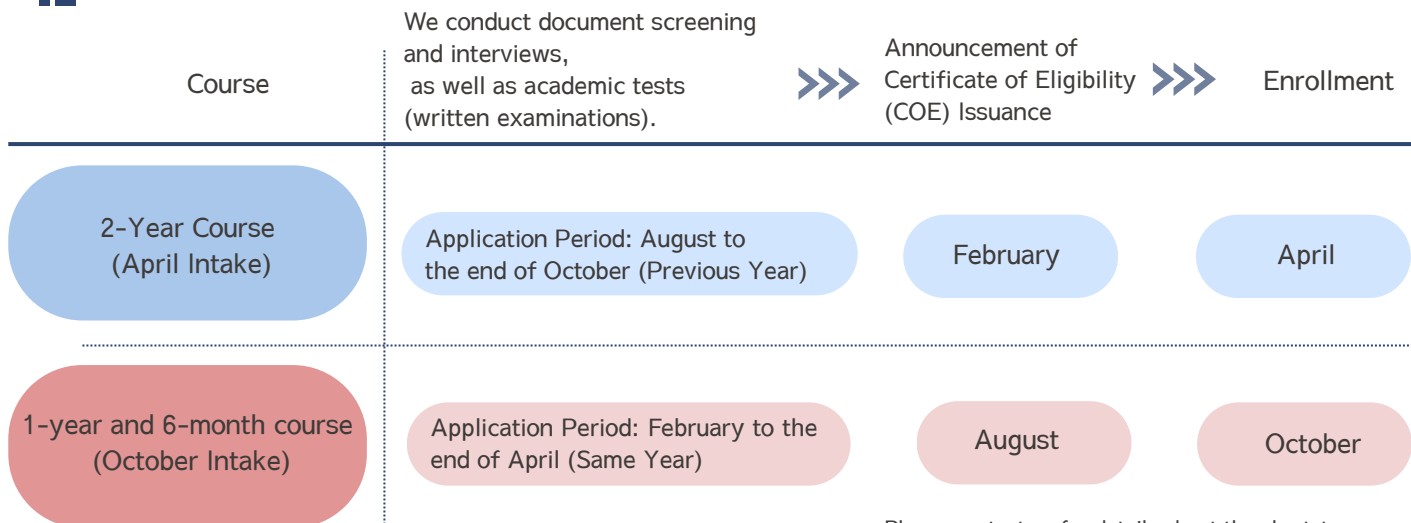


EJU Preparation Course

For two months before the exam, we offer preparation courses in Japanese, Mathematics, Science, and Comprehensive Subjects.

SELECTION

Selection and Admission Process



Step 1

School Information Session

Provide information about studying abroad

Step 3

Entrance Examination

- Written examination conducted at N5 to N4 level
- Interview conducted
- Pay the application fee of 30,000 yen (Included in the first-year tuition fees)
- Japanese written test, IQ test, and English

The results of these tests are comprehensively evaluated to determine acceptance or rejection.

Step 5

Issuance of Certificate of Eligibility (COE)

After the issuance of the COE, please transfer the first-year tuition fees to the designated bank account by the deadline (within 14 days).

Details of First-Year Payment

- Admission Fee
- Tuition Fee
- Other Fees
- National Health Insurance Premium
- For the first year, the school collects and pays this on behalf of the student
- Dormitory Fee (6 months) / Dormitory Admission Fee

Step 2

Application

Submission of Application for Admission

※ For application inquiries, please contact our school.

Step 4

Application for Certificate of Eligibility (COE)

Submit the application documents by the deadline.

Step 6

Visa Issuance

After confirming the payment of the first-year fees, our school will send the following two items.

- Application for Certificate of Eligibility (COE)
- Letter of Admission

※ Please apply for visa issuance at the local Japanese embassy or consulate.

Step 7

Arrival in Japan and Enrollment

2-YEAR PROGRESSION COURSE

COURSE OUTLINE

This is a two-year Japanese language course.

Students start learning Japanese from the beginner level (N5) and aim to reach the intermediate-upper or advanced level by graduation.

Level	Period	Level-specific Learning Goals	CEFR/JLPT
Beginner level	20 weeks (400 hours)	I can talk about myself at this level. I can have simple conversations and do basic reading and writing about familiar topics.	A1/N5・N4
Pre-intermediate level	10 weeks (200 hours)	Able to talk about oneself and surroundings. Can have conversations and do reading and writing on familiar topics.	A2/N3
Intermediate level	20 weeks (400 hours)	Able to explain topics of interest. Can have conversations and do reading and writing about everyday subjects.	B1/N3・N2
Upper-intermediate level	10 weeks (200 hours)	Able to express fluently on various topics. Can have conversations and do reading and writing about social issues.	B2/N2
Advanced level	20 weeks (400 hours)	Able to attend university lectures on the same level as native Japanese speakers. Can have conversations and do reading and writing about complex social topics.	B2・C1/N1

※The “Other Fees” include facility fees, equipment fees, textbook fees, extracurricular activity fees, and insurance fees.
For detailed regulations and information regarding tuition fees, please contact us.

TUITION FEE

	Fiscal year	Selection fee	Admission fee	Tuition	※ Other fees	Total
2-Year Course (April Intake)	First year	30,000 yen	50,000 yen	680,000 yen	160,000 yen	920,000 yen
	Second year	—	—	680,000 yen	—	680,000 yen
	Total	30,000 yen	50,000 yen	1,360,000 yen	160,000 yen	1,600,000 yen

※All the above amounts include consumption tax.

REFUNDS

	Before submitting the COE application documents	After submitting the COE application documents	Before payment of the first-year fees	After payment of the first-year fees
Selection fee	×	×	×	×
Admission fee	—	—	—	×
Tuition	—	—	—	○
Other fees	—	—	—	○
Health insurance fee	—	—	—	○
Dormitory fee	—	—	—	○

1.5-YEAR PROGRESSION COURSE

COURSE OUTLINE

In the 1 year and 6 months advancement course, students begin studying Japanese from the upper beginner level (N4) and aim to reach the upper-intermediate or advanced level by graduation.

Level	Period	Level-specific Learning Goals	CEFR/JLPT
Beginner level	10 weeks (200 hours)	Able to talk about oneself. Can have simple conversations and do basic reading and writing about familiar topics.	A1/N4
Pre-intermediate level	10 weeks (200 hours)	Able to talk about oneself and surroundings. Can have conversations and do reading and writing on familiar topics.	A2/N3
Intermediate level	20 weeks (400 hours)	Able to explain topics of interest. Can have conversations and do reading and writing about everyday subjects.	B1/N3・N2
Upper-intermediate level	10 weeks (200 hours)	Able to express themselves fluently on various topics. Can have conversations and do reading and writing about social issues.	B2/N2
Advanced level	10 weeks (200 hours)	Able to make persuasive arguments. Can have conversations and do reading and writing about complex social topics.	B2・N2

※The “Other Fees” include facility fees, equipment fees, textbook fees, extracurricular activity fees, and insurance fees.
For detailed regulations and information regarding tuition fees, please contact us.

TUITION FEE

	Fiscal year	Selection fee	Admission fee	Tuition	※ Other fees	Total
1-year and 6-month course (October Intake)	First year	30,000 yen	50,000 yen	680,000 yen	140,000 yen	900,000 yen
	Second year	—	—	340,000 yen	—	340,000 yen
	Total	30,000 yen	50,000 yen	1,020,000 yen	140,000 yen	1,240,000 yen

※All the above amounts include consumption tax.

Visa denial	After visa issuance, before arrival in Japan	After arrival in Japan, before enrollment	After classes begin
×	×	×	×
×	×	×	×
○	○	○	△
○	○	○	×
○	○	○	△
○	○	○	△

○ Refund
△ Partial refund (conditions apply)
× No refund

QUALIFICATION REQUIREMENTS

Regarding Eligibility Requirements

- Applicants must have completed a **total of 12 years of education** or an equivalent curriculum in their home country.
- Applicants must have been granted, or be expected to be granted, permission to enter Japan through proper procedures.
- Applicants must have passed the **Japanese Language Proficiency Test (JLPT) at N5 level or higher**.
- For the 1 year and 6 months course, applicants must have passed **JLPT at N4 level or higher**, or be recognized by our school as having equivalent Japanese proficiency.
- Applicants must have sufficient financial ability to cover tuition, living expenses, and other costs during their stay at our school.
- Applicants must have a clear purpose for studying in Japan and a definite plan for their future path after graduation.

Required Documents for Enrollment Application

Documents to be Prepared by the Student

- Copy of passport (If you have previously visited Japan, include the entry/exit record pages)
- Application form for admission (school' s specified format)
- Resume and statement of purpose for studying (school' s specified format)
- Graduation certificate from the last school attended
- Certificate of enrollment and certificate of leave of absence (if applicable)
- Certificate of passing the Japanese Language Proficiency Test (JLPT) N5 level or above (*N4 or above for the 1 year and 6 months course)
- Eight photos (taken within the last 6 months before application;
size: 4 cm height × 3 cm width)

Additionally, any documents required by the Immigration Services Agency of Japan

Documents to be Prepared by the Guarantor

For those residing outside Japan:

1. Bank balance certificate (issued by a bank)
2. Certificate of employment and business registration certificate
3. Family register (koseki) copy proving the relationship with the student

For those residing in Japan:

1. Certificate of payment of resident tax or income tax
2. Certificate of affiliation or corporate registration certificate
3. Financial support statement (school' s specified format)
4. Certificate of seal registration
5. Bank balance certificate (if required)

If the student will cover their own living expenses:

1. Bank balance certificate (in the student' s name)
2. Original certificate of employment or business registration certificate

Additionally, any documents required by the Immigration Services Agency of Japan.

SHORT COURSE



JAPANESE LANGUAGE COURSE FOR RESIDENTS AND WORKERS

Japanese Language Skill-Up Course for Daily Life and Work

Visa status: **Dependent, Working**

Class Lesson

Fee (tax included)

20 days 66,000 yen

60 days 188,100 yen **(5%OFF)**

120 days 356,400 yen **(10%OFF)**

Group Lesson

Fee (tax included)

20 days 77,000 yen

60 days 219,450 yen **(5%OFF)**

120 days 415,800 yen **(10%OFF)**

※Class Lesson and Group Lesson : Four 45-minute classes per day on weekdays
: 20 days of class lessons

Private Lesson

Fee (tax included)

1 session 5,500 yen

10 sessions 55,000 yen

20 sessions 104,500 yen **(5%OFF)**

30 sessions 148,500 yen **(10%OFF)**

Online Lesson

Fee (tax included)

1 session 5,500 yen

10 sessions 55,000 yen

20 sessions 104,500 yen **(5%OFF)**

30 sessions 148,500 yen **(10%OFF)**

※Private Lesson and Online Lesson : 1 session = 1 hour



※There may be a participation fee for joining event.

※In addition to the lesson fee, a textbook fee is required

INTERVIEW

We asked current students!

3 Questions

We interviewed senior students about what makes Howdy Japanese Language School Nara special, as well as their dreams for the future. Please take a look and let their stories inspire you!

Q1 What do you find appealing about Howdy Japanese Language School, Nara?

The beautiful scenery is one of the best things. From the third floor, we can see the town where we live. Looking at the lovely view always lifts my spirits.

Q2 What is your favorite Japanese word?

My favorite Japanese word is "densha" (train). There are no trains in Nepal, so I find them very convenient in Japan. I often use them in my daily life.

Q3 A message for students who wish to enroll!

The senior students are very kind and supportive if you have any problems. The teachers' lessons are easy to understand, so I think your Japanese will improve quickly. School life here is really enjoyable!

I love Japanese trains!

BISTA RITA



Ms. RITA
October 2023 Intake
From Nepal

Q1 What do you find appealing about Howdy Japanese Language School, Nara?

The best thing is that there is so much to learn. It's very enjoyable to study with students from various countries, and the experienced teachers give interesting lessons that motivate me to study Japanese.

Q2 What is your dream for the future?

My dream is to pass the JLPT N1 and work in Japan for a long time. I haven't decided exactly what I want to do yet, but I want to contribute to the development of both Japan and Bangladesh.

Q3 A message for students who wish to enroll!

In addition to regular classes, there are various events such as field trips, sports activities, and interaction events with local residents. At Howdy Japanese Language School Nara, you can learn not only Japanese but also many things necessary to live in Japanese society, which I believe will enhance your personal value.

HOSEN MD SAGOR



Mr. SAGOR
October 2023 Intake
From Bangladesh



Q1 What do you find appealing about Howdy Japanese Language School, Nara?

There are many good things about this school, but what stands out the most is that the classes are very easy to understand and engaging. The teachers are also very kind and teach us many things beyond just studying.

Q2 What is your favorite Japanese word?

My favorite Japanese word is "daijoubu" (meaning "Are you okay?" or "It's okay"). I like helping people, so I often ask those in trouble, "Daijoubu desu ka?" I love this word because it's a phrase that helps others.

Q3 A message for students who wish to enroll!

There are various seasonal events like festivals and Tanabata, which are really fun!

THAPA KARUNA



Ms. KARUNA
October 2023 Intake
From Nepal



INTERVIEW

Q1 What do you find appealing about Howdy Japanese Language School, Nara?

The most attractive part is the curriculum, which is designed to consider each student's strengths and weaknesses. Our homeroom teacher always cares about us, listens seriously to our problems, and helps us.

Q3 A message for students who wish to enroll!

The teachers are very kind and always ready to support us, so I can feel at ease during my school life. Let's study together at this warm and welcoming school!

Q2 What is your dream for the future?

My dream is to travel around the world, experience various cultures, interact with people, and build relationships between Vietnam and other countries. I also want to start a project to attract tourists to Vietnam. My goal is to contribute to Vietnam's growth from a developing country to a developed nation.

KIM MINH DUONG



Mr. **DUONG**

October 2023 Intake
From Vietnam



Q1 What do you find appealing about Howdy Japanese Language School, Nara?

The teachers are very kind and always patiently explain things whenever I don't understand something!



Q2 What is your favorite Japanese word?

My favorite Japanese word is "daijoubu" (meaning "It's okay" or "Are you alright?"). When I first came to Japan and did a part-time job, I made a mistake at work. At that time, someone kindly told me, "Daijoubu desu yo," which made me feel better and showed me how kind and compassionate Japanese people are. That's why I came to like the word "daijoubu."

Q3 A message for students who wish to enroll!

If you enroll at Howdy Japanese Language School Nara, you can study Japanese thoroughly and enjoy a safe and comfortable study abroad life. If you have any questions, please don't hesitate to ask the teachers and senior students!

WAIBA NAMRATA



Ms. **NAMURATA**



October 2023 Intake
From Nepal

Q1 What do you find appealing about Howdy Japanese Language School, Nara?

Not only do they teach us Japanese, but they also deeply introduce and let us experience Japanese culture. Although getting used to life in Japan is challenging, they provide strong support so that we can live comfortably and with peace of mind. Another attractive point is that we can study in a quiet environment.

Q3 A message for students who wish to enroll!

At Howdy Japanese Language School Nara, there are curricula tailored to everyone's level, from beginners to advanced learners. They support you so that you can steadily improve your Japanese and achieve your goals. Let's sharpen our Japanese skills together, experience Japan's rich culture, and make new friends and memories. We look forward to meeting you all!

Q2 What is your dream for the future?

My goal is to work at Toyota, a famous Japanese automobile company. After gaining experience in Japan, my dream is to return to Bangladesh and start my own car company. To achieve this, I am determined to study automotive engineering hard.

ALI MD IMRAN



Mr. **IMRAN**

October 2023 Intake
From Bangladesh

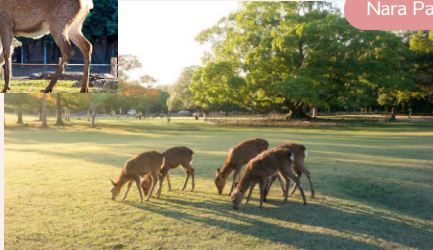


SIGHTS IN KANSAI

You can access major popular tourist spots in the Kansai region.
Here are some famous spots selected from many options.



Nara Park



A popular spot where you can interact with deer.



Great Buddha



Kasuga Taisha

NARA

There are eight shrines, temples, and archaeological sites in Nara registered as the UNESCO World Heritage Sites known as the "Historic Monuments of Ancient Nara."

Todai-ji



HYOGO

There are many relaxing hot spring towns and spots with beautiful night views.

Meriken Park



A photogenic and popular spot.

Kobe Port Tower



Himeji Castle



A castle designated as a UNESCO World Cultural Heritage site.

Kitano Ijinkan District



A town full of exotic charm.

An ancient Japanese city lined with temples and shrines, where traditional culture remains deeply rooted.

Kiyomizu-dera



A temple famous for the "Stage of Kiyomizu" (Kiyomizu no Butai).

Five-story pagoda



KYOTO



Arashiyama Togetsukyo Bridge

Many traditional Japanese landscapes, temples, and shrines.



Nara is close to both Osaka and Kyoto.

You can use long vacations like summer break to travel with your friends.



OSAKA

Theme parks, shopping malls, and other popular spots where young people gather are all concentrated here.

Universal Studios Japan



A theme park where you can experience the world of Hollywood movies.



Osaka Castle

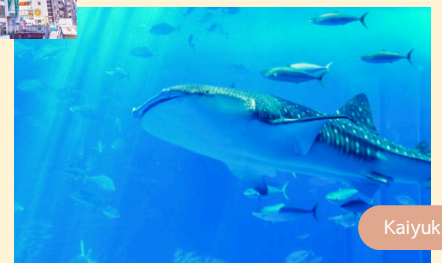


A castle built during the Sengoku period.

Shinsaibashi



A bustling city popular with tourists. The Glico sign is a well-known landmark and a popular photo spot.



Kaiyukan

A popular aquarium famous for its giant tank and whale sharks.

ABOUT OUR GROUP SCHOOL

Experience Learning in Osaka



Features of the Osaka School

1

A CONVENIENT URBAN CAMPUS

The Osaka Campus, located in Osaka—the second largest city in Japan—is conveniently situated within walking distance of supermarkets, convenience stores, banks, and more. Since it is an area with a large foreign population, there are restaurants and shops from around the world, and many part-time job opportunities, which makes it a popular choice.

Features of the Osaka School

2

DIVERSITY IS OUR STRENGTH! HANDS-ON LEARNING OPPORTUNITIES AVAILABLE.

Because the students come from many different countries and Japanese is the common language, conversations in Japanese fill the breaks between classes. Students also participate in local community exchange events, where they talk about their own countries in Japanese and listen to stories from local residents. We place strong emphasis on this kind of "experiential learning."



3-15-11 Shariji,
Ikuno-ku, Osaka-shi,
Osaka-fu, Japan



Website



Facebook

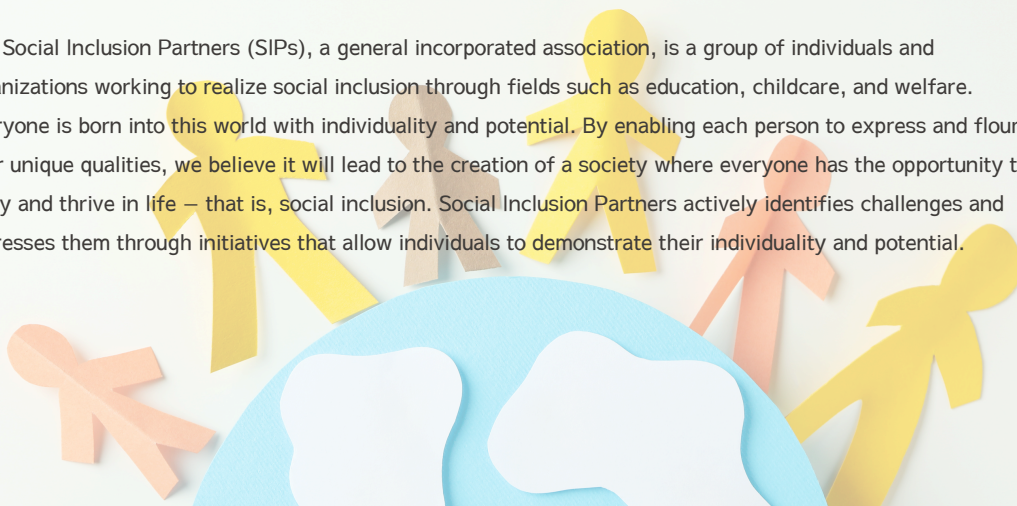


ABOUT SIPs

こせい
カラフルな●▲■が、
ひずみ
凹凸ある世界で躍動する、
ソーシャルインクルージョンの実現

The Vision of Howdy Co., Ltd., the Operator of Howdy Japanese Language School

The Social Inclusion Partners (SIPs), a general incorporated association, is a group of individuals and organizations working to realize social inclusion through fields such as education, childcare, and welfare. Everyone is born into this world with individuality and potential. By enabling each person to express and flourish their unique qualities, we believe it will lead to the creation of a society where everyone has the opportunity to enjoy and thrive in life — that is, social inclusion. Social Inclusion Partners actively identifies challenges and addresses them through initiatives that allow individuals to demonstrate their individuality and potential.



SOCIAL MEDIA & CONTACT INFORMATION

Our website and Facebook page are updated weekly with articles about events, classes, and more.

Please take a look at the activities and daily lives of the students studying at Howdy Japanese Language School, Nara!

Lots of fun events and lively exchanges!



Home Page



HOWDY TIMES publishes the latest information every week.

Facebook



We post timely updates on events and community interactions.

E-mail



If you are interested, please feel free to contact us here.

Youtube



We have just launched it! Please look forward to regular updates coming soon.



Cherry blossoms in full bloom!



Entrance Ceremony

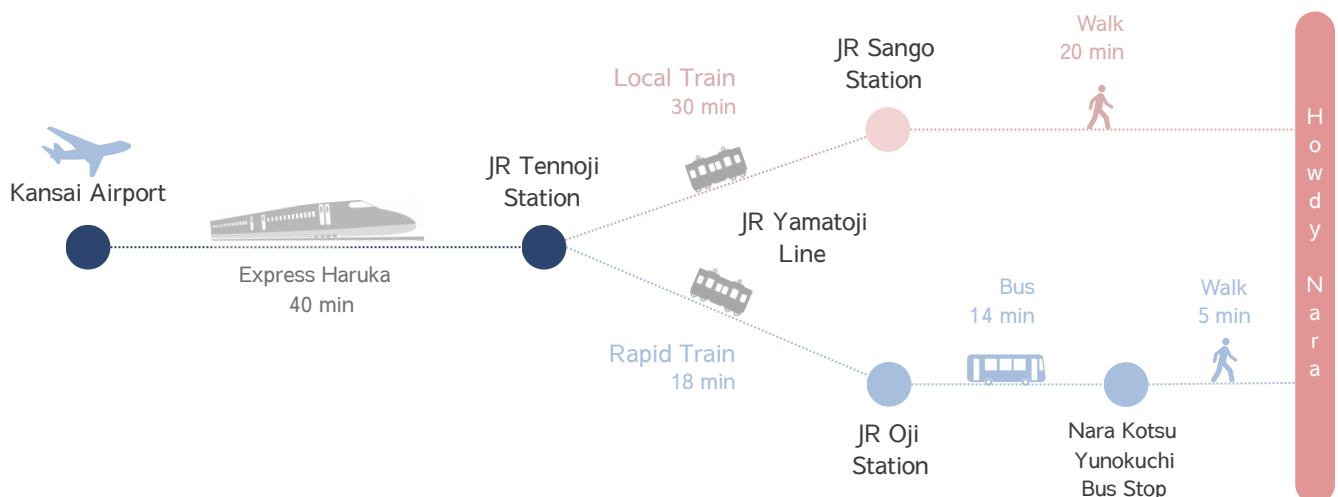


Sango Sports Festival



Sango School lunch center

ACCESS



MEMO





ハウディ日本語学校 奈良校

HOWDY JAPANESE LANGUAGE SCHOOL NARA

3-12-6, Tatsunokita
Sango-Cho, Ikoma-gun
Nara, Japan, 636-0821

TEL + 81-745-44-3271
FAX + 81-745-44-3272

